

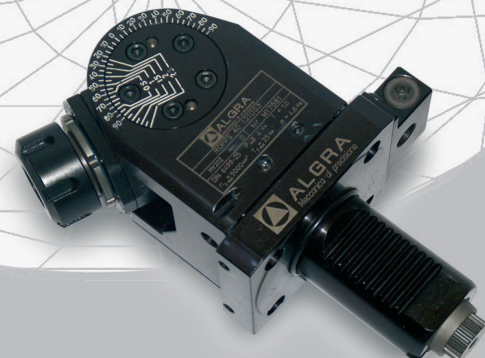
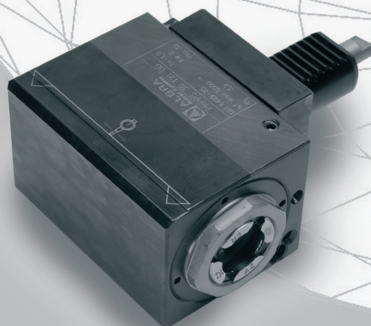


ALGRA
Meccanica di precisione

VDI动力刀座选型样本

PORTAUTENSILI ROT ANTI VDI

DRIVEN TOOL VDI



STAMPATO SU CARTA RICICLATA - PRINTED ON RECYCLED PAPER - IMPRIMÉ SUR PAPIER RECYCLÉ - GEDRUCKT AUF AUFBEREITETEM PAPIER

上海罗拓自动化技术有限公司
电话：021-64120150
网址：www.algra.cn

传真：021-64121797

2010



ALGRA
Meccanica di precisione

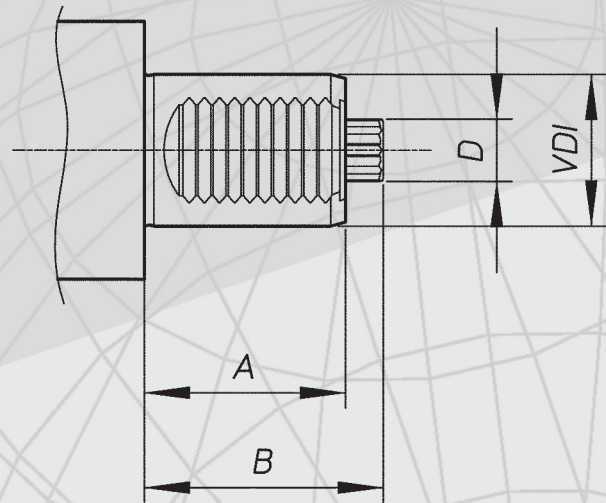
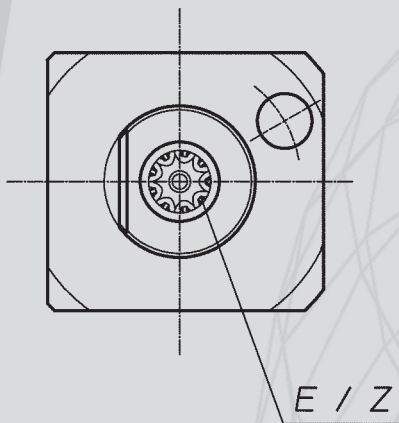
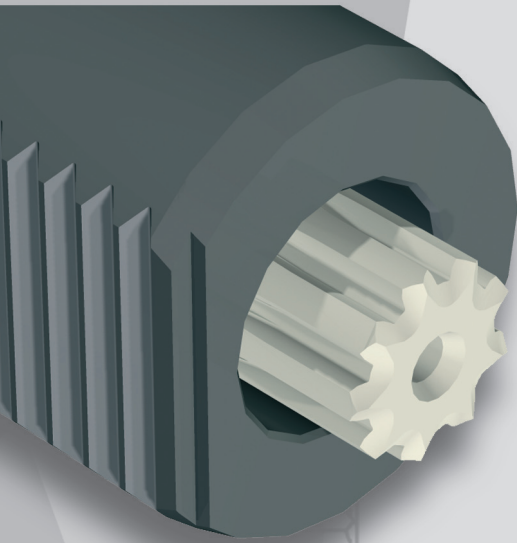
DIN 5482

联接动力轴规格标准

COUPLING - ACCOUPLEMENT - KUPPLUNG

S1

DIN 5482



VDI	A	B	D	E	Z
30	45	55	14,5	B15X12	8
40	53	63	16,5	B17X14	9
50	78	93	19,5	B20X17	11
60	94	108	24,5	B25X22	14

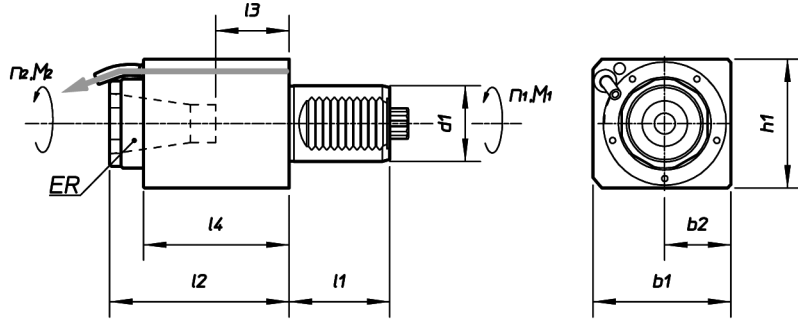
S1

DIN 5482



1/S1

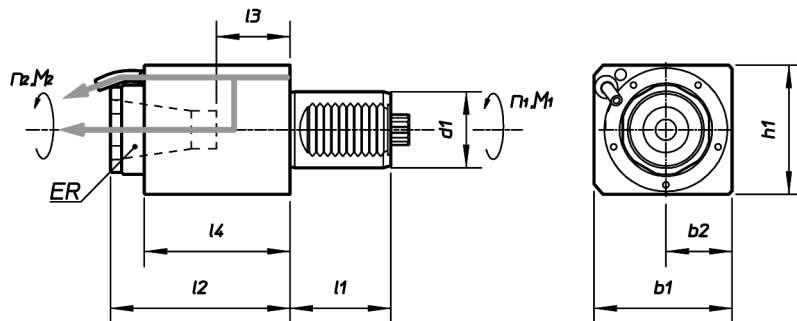
轴向 Axial Assiale Axial	0度筒夹型刀座 Collet chuck Portapinza Spannzangeaufnahme	可外冷 External coolant supply Refrigerazione esterna Kühlschmierstoffzuführung extern	1 : 1速比 $i = n1:n2 = +1 (1:1)$
---------------------------------	---	--	-----------------------------------



编号 code	d1	ER	l1	l2	l3	l4	b1	b2	h1	M2 Nm	n2 min-1	p kw		
RAPPS 30 121US1	30	25	45	94	39	88	62	31	64	32	5000	8		
RAPPS 30 221US1	30	25	45	66	21	59	62	31	64	32	5000	8		
RAPPS 40 121US1	40	32	53	115	54	97	73	35	70	63	4000	10		
RAPPS 40 221US1	40	32	53	95	34	77	73	35	70	63	4000	10		
RAPPS 50 121US1	50	40	78	150	75	142	88	44	88	100	4000	12		
RAPPS 60 121US1	60	50	94	220	110	168	110	55	110	160	3200	15		

2/S1

轴向 Axial Assiale Axial	0度筒夹型刀座 Collet chuck Portapinza Spannzangeaufnahme	内冷和外冷皆可 External and internal coolant supply Refrigerazione interna-esterna Kühlschmierstoffzuführung extern und intern	1 : 1速比 $i = n1:n2 = +1 (1:1)$
---------------------------------	---	--	-----------------------------------



编号 code	d1	ER	l1	l2	l3	l4	b1	b2	h1	M2 Nm	n2 min-1	p kw		
RAPPS 30 131US1	30	25	45	94	39	88	62	31	64	32	5000	8		
RAPPS 40 131US1	40	32	53	115	54	97	73	35	70	63	4000	10		
RAPPS 40 231US1	40	32	53	95	34	77	73	35	70	63	4000	10		
RAPPS 50 131US1	50	40	78	133	45	112	88	44	88	100	4000	12		
RAPPS 60 131US1	60	50	94	228	110	168	110	55	110	160	3200	15		

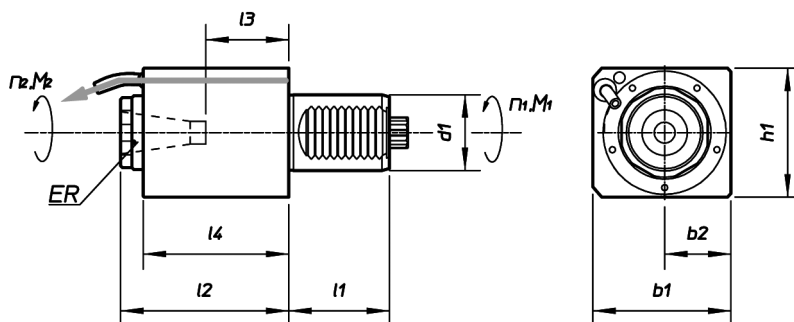
3/S1

轴向	0度筒夹型刀座	可外冷
Axial	Collet chuck	External coolant supply
Assiale	Portapinza	Refrigerazione esterna
Axial	Spannzangeaufnahme	Kühlschmierstoffzuführung extern

1 : 4 增速比

 $i = n_1:n_2 = +0,25 (1:4)$
S1

DIN 5482

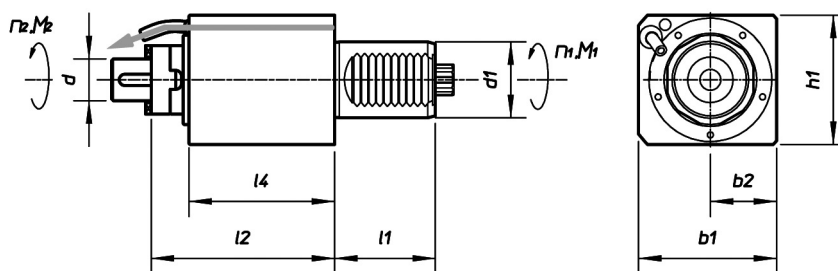


编号 code	d1	ER	l1	l2	l3	l4	b1	b2	h1	M ₂ Nm	n ₂ min-1	p kw
RAPPS 30 122US1	30	16	45	100	58	88	62	31	64	8	20000	4
RAPPS 40 122US1	40	20	53	112,5	74,5	106	76	38	76	16	16000	5
RAPPS 50 122US1	50	20	78	128,5	88,5	122	88	44	88	25	16000	6

4/S1

轴向	0度面铣刀座	可外冷
Axial	Shell end milling cutters	External coolant supply
Assiale	Portafresa	Refrigerazione esterna
Axial	Fräseraufnahme	Kühlschmierstoffzuführung extern

1 : 1 速比

 $i = n_1:n_2 = +1 (1:1)$


编号 code	d1	d	l1	l2	l3	l4	b1	b2	h1	M ₂ Nm	n ₂ min-1	p kw
RAPFS 30 121US1	30	Ø 22	45	112		88	62	31	64	32	5000	8
RAPFS 40 121US1	40	Ø 22	53	124		99	73	35	70	63	4000	10

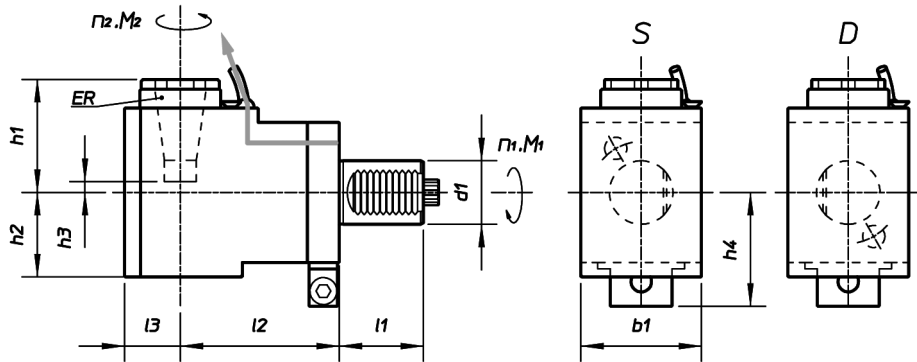


S1

5/S1

径向 Radial Radiale Radial	90度筒夹型刀座 Collet chuck Portapinza Spannzangeaufnahme	可外冷 External coolant supply Refrigerazione esterna Kühlschmierstoffzuführung extern	1 : 1速比 $i = n1:n2 = -1 (1:1)$
-----------------------------------	--	--	-----------------------------------

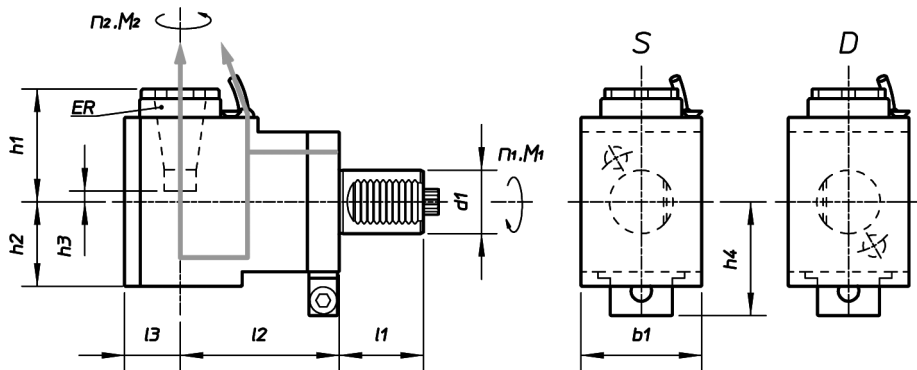
DIN 5482



编号 code S	D	d1	ER	l1	l2	l3	b1	h1	h2	h3	h4	M ₂ Nm	n ₂ min-1	p kw
RRPPS 30 121SS1	RRPPS 30 121DS1	30	25	45	55	31	64	56	48	3	52	32	5000	8
RRPPS 30 321SS1	RRPPS 30 321DS1	30	25	45	85	31	64	56	48	3	52	32	5000	8
RRPPS 30 421SS1	RRPPS 30 421DS1	30	25	45	100	31	64	56	48	3	52	32	5000	8
RRPPS 40 121SS1	RRPPS 40 121DS1	40	32	53	100	35	76	71	55	11	71	63	4000	10
RRPPS 50 121SS1	RRPPS 50 121DS1	50	40	78	110	44	88	92	62	17	80,5	100	4000	12
RRPPS 60 121SS1	RRPPS 60 121DS1	60	50	94	130	55	110	149	102	39	103	160	3200	15

6/S1

径向 Radial Radiale Radial	90度筒夹型刀座 Collet chuck Portapinza Spannzangeaufnahme	内冷和外冷皆可 External and internal coolant supply Refrigerazione interna-esterna Kühlschmierstoffzuführung extern und intern	1 : 1速比 $i = n1:n2 = -1 (1:1)$
-----------------------------------	--	--	-----------------------------------



编号 code S	D	d1	ER	l1	l2	l3	b1	h1	h2	h3	h4	M ₂ Nm	n ₂ min-1	p kw
RRPPS 30 131SS1	RRPPS 30 131DS1	30	25	45	55	31	64	56	60	2	52	32	5000	8
RRPPS 30 331SS1	RRPPS 30 331DS1	30	25	45	85	31	64	56	60	2	52	32	5000	8
RRPPS 30 431SS1	RRPPS 30 431DS1	30	25	45	100	31	64	56	60	2	52	32	5000	8
RRPPS 40 131SS1	RRPPS 40 131DS1	40	32	53	100	35	76	71	62	11	71	63	4000	10
RRPPS 50 131SS1	RRPPS 50 131DS1	50	40	78	110	44	88	105	79,5	17	80,5	100	4000	12
RRPPS 60 131SS1	RRPPS 60 131DS1	60	50	94	130	55	110	157	102	39	103	160	3200	15

7/S1

后缩偏置

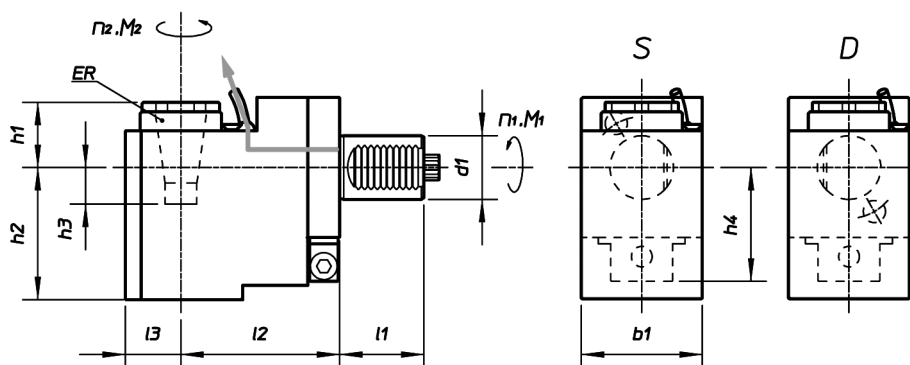
 Rear offset
 Arretrato
 Zurückgesetzt

90度后缩式筒夹型刀座

 Collet chuck
 Portapinza
 Spannzangeaufnahme

可外冷

 External coolant supply
 Refrigerazione esterna
 Kühlschmierstoffzuführung extern

1 : 1速比
 $i = n1:n2 = +1 (1:1)$

S1
 DIN 5482


编号 S	code D	d1	ER	l1	l2	l3	b1	h1	h2	h3	h4	M ₂ Nm	n ₂ min ⁻¹	p kw
RRPPA 30 321SS1	RRPPA 30 321DS1	30	25	45	85	31	64	14,5	90	45	52	32	5000	8
RRPPA 40 121SS1	RRPPA 40 121DS1	40	32	53	100	35	76	20	106	40	72,5	63	4000	10
RRPPA 50 121SS1	RRPPA 50 121DS1	50	40	78	110	44	88	31	123	44	80,5	100	4000	12
RRPPA 60 121SS1	RRPPA 60 121DS1	60	50	94	135	55	110	67	184	43	103	160	3200	15

8/S1

后缩偏置

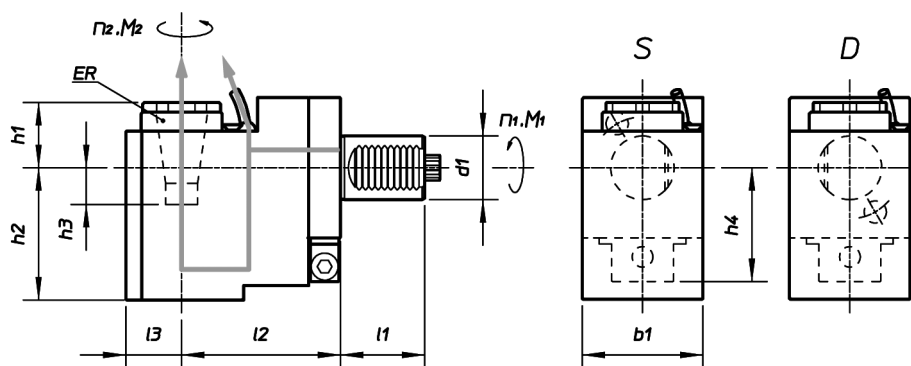
 Rear offset
 Arretrato
 Zurückgesetzt

90度后缩式筒夹型刀座

 Collet chuck
 Portapinza
 Spannzangeaufnahme

内冷和外冷皆可

 External and internal coolant supply
 Refrigerazione interna-esterna
 Kühlschmierstoffzuführung extern und intern

1 : 1速比
 $i = n1:n2 = +1 (1:1)$


编号 S	code D	d1	ER	l1	l2	l3	b1	h1	h2	h3	h4	M ₂ Nm	n ₂ min ⁻¹	p kw
RRPPA 30 331SS1	RRPPA 30 331DS1	30	25	45	85	31	64	24	105,5	45,5	52	32	5000	8
RRPPA 40 131SS1	RRPPA 40 131DS1	40	32	53	100	35	76	30	124	40	72,5	63	4000	10
RRPPA 50 131SS1	RRPPA 50 131DS1	50	40	78	110	44	88	44	140,5	44	80,5	100	4000	12
RRPPA 60 131SS1	RRPPA 60 131DS1	60	50	94	135	55	110	75	184	43	103	160	3200	15

S1

9/S1

后缩偏置

 Rear offset
 Arretrato
 Zurückgesetzt

90度后缩式筒夹型刀座

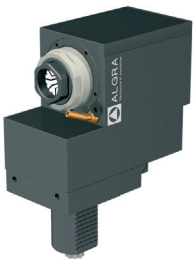
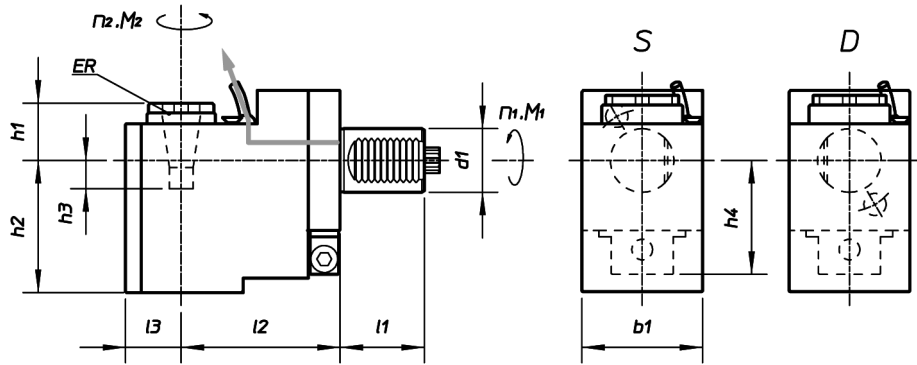
 Collet chuck
 Portapinza
 Spannzangeaufnahme

可外冷

 External coolant supply
 Refrigerazione esterna
 Kühlschmierstoffzuführung extern

1 : 4增速比
 $i = n_1:n_2 = +0,25 (1:4)$

DIN 5482


编号 code

S	D	d1	ER	l1	l2	l3	b1	h1	h2	h3	h4	M ₂ Nm	n ₂ min ⁻¹	p kw
RRPPA 30 122SS1	RRPPA 30 122DS1	30	16	45	95	21	64	33	84	15	56	8	20000	4
RRPPA 40 122SS1	RRPPA 40 122DS1	40	20	53	125	27	76	45	108	10	65,5	16	16000	5
RRPPA 50 122SS1	RRPPA 50 122DS1	50	20	78	135	27	86	45	113	10	73,5	25	16000	6

径向

 Radial
 Radiale
 Radial

90度后缩式筒夹刀座

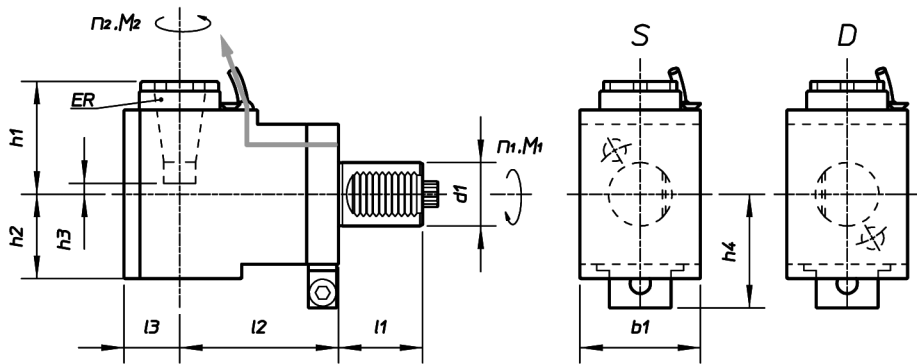
 Collet chuck
 Portapinza
 Spannzangeaufnahme

可外冷

 External coolant supply
 Refrigerazione esterna
 Kühlschmierstoffzuführung extern

2 : 1减速比
 $i = n_1:n_2 = -2 (2:1)$

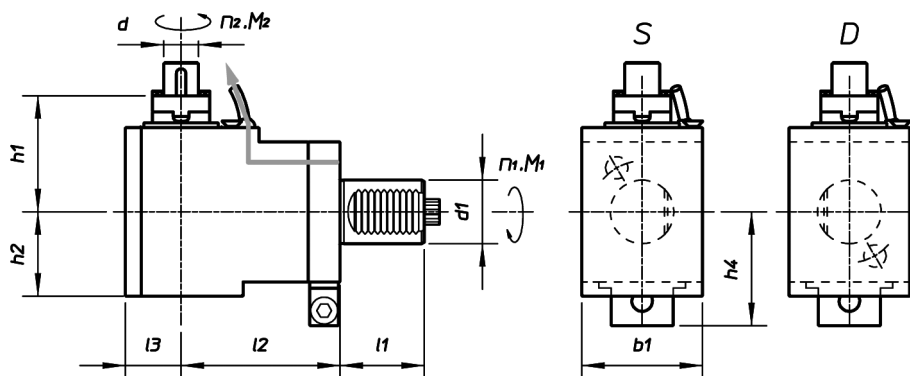
10/S1


编号 code

S	D	d1	ER	l1	l2	l3	b1	h1	h2	h3	h4	M ₂ Nm	n ₂ min ⁻¹	p kw
RRPPS 30 123SS1	RRPPS 30 123DS1	30	25	45	55	31	64	56,5	48	3	52	63	2500	8
RRPPS 40 123SS1	RRPPS 40 123DS1	40	32	53	100	35	76	71	55	-11	72,5	63	2000	8

11/S1

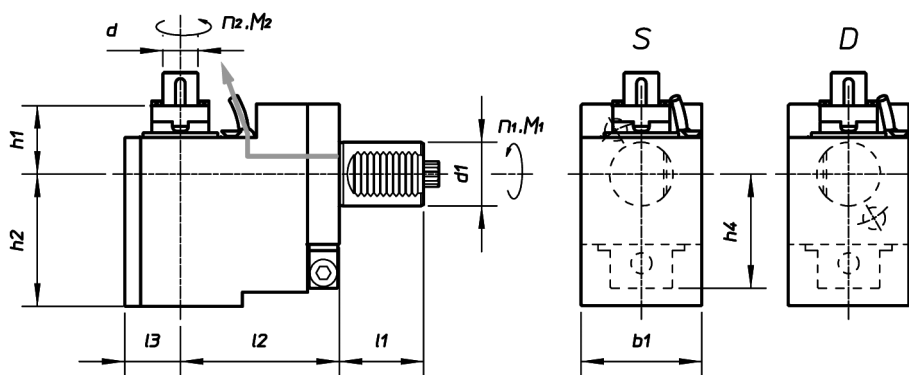
径向 Radial Radiale Radial	90度面铣刀座 Shell end milling cutters Portafresa Fräseraufnahme	可外冷 External coolant supply Refrigerazione esterna Kühlschmierstoffzuführung extern	2 : 1減速比 $i = n_1:n_2 = -2 (2:1)$
-----------------------------------	--	--	--------------------------------------



编号 code S	D	d1	d	l1	l2	l3	b1	h1	h2	h4	M ₂ Nm	n ₂ min-1	p kw
RRPFS 30 123SS1	RRPFS 30 123DS1	30	Ø 22	45	55	31	64	74	48	52	63	2500	8
RRPFS 40 123SS1	RRPFS 40 123DS1	40	Ø 22	53	100	35	76	78	55	72,5	63	2000	8

12/S1

后缩偏置 Rear offset Arretrato Zurückgesetzt	90度后缩式面铣刀座 Shell end milling cutters Portafresa Fräseraufnahme	可外冷 External coolant supply Refrigerazione esterna Kühlschmierstoffzuführung extern	1 : 1速比 $i = n_1:n_2 = +1 (1:1)$
---	---	--	-------------------------------------



编号 code S	D	d1	d	l1	l2	l3	b1	h1	h2	h4	M ₂ Nm	n ₂ min-1	p kw
RRPFA 30 321SS1	RRPFA 30 321DS1	30	Ø 22	45	85	31	64	32	90	52	32	2500	8
RRPFA 40 121SS1	RRPFA 40 121DS1	40	Ø 22	53	100	35	76	27	106	72,5	63	4000	10

S1

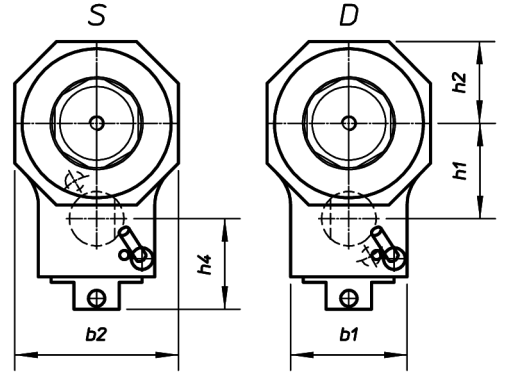
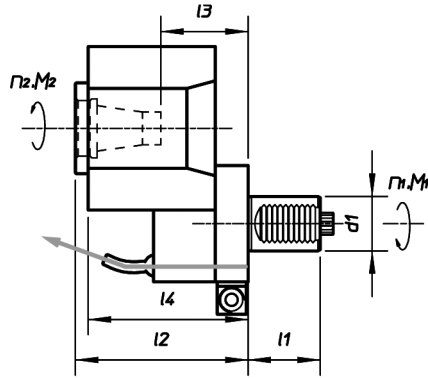
13/S1

轴向偏置
Offset axis
Disassato
Achsversatz

90度筒夹型刀座
Collet chuck
Portapinza
Spannzangeaufnahme

可外冷
External coolant supply
Refrigerazione esterna
Kühlschmierstoffzuführung extern

2 : 1减速比
 $i = n1:n2 = -2 (2:1)$



编号 code	D	d1	ER	l1	l2	l4	b1	b2	h1	h2	h4	M ² Nm	n ₂ min-1	p kw
RAPPD 30 123SS1	RAPPD 30 123DS1	30	25	45	95	88	64	90	52,5	45	54	64	3000	8

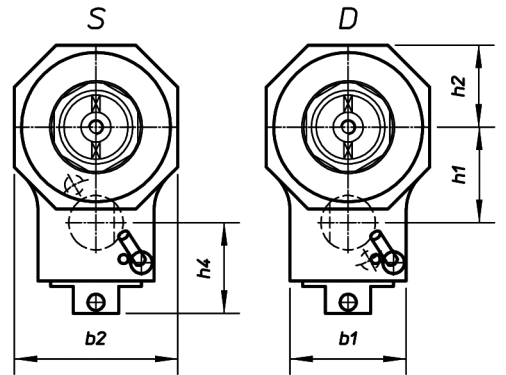
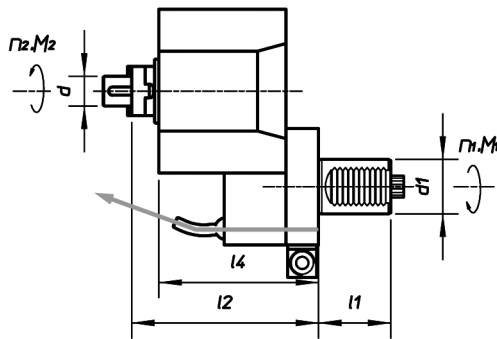
14/S1

轴向偏置
Offset axis
Disassato
Achsversatz

0度偏置面铣刀座
Shell end milling cutters
Portafresa
Fräseraufnahme

可外冷
External coolant supply
Refrigerazione esterna
Kühlschmierstoffzuführung extern

2 : 1减速比
 $i = n1:n2 = -2 (2:1)$

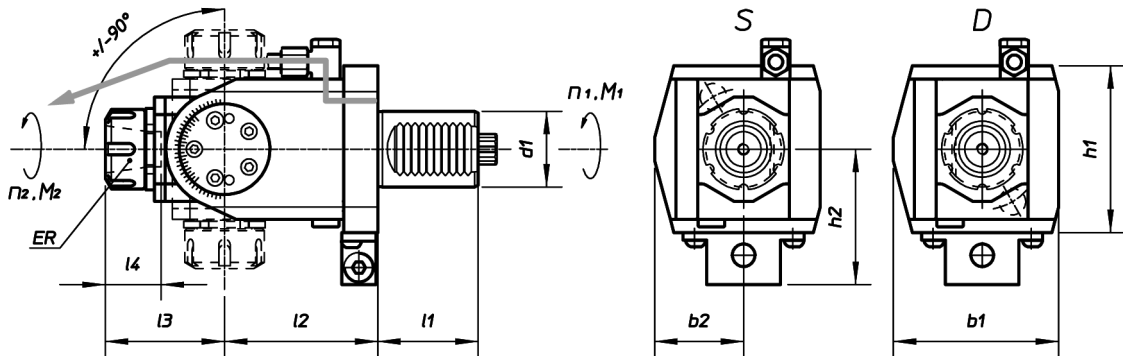


编号 code	D	d1	ER	l1	l2	l4	b1	b2	h1	h2	h4	M ² Nm	n ₂ min-1	p kw
RAPFD 30 223SS1	RAPFD 30 223DS1	30	∅ 22	45	95	88	64	90	52,5	45	54	64	3000	8

15/S1

角度可调 Angle adjustable Orientabile winkeleinstellbar	筒夹型刀座 Collet chuck Portapinza Spannzangeaufnahme	可外冷 External coolant supply Refrigerazione esterna Kühlschmierstoffzuführung extern
--	---	--

1 : 1 速比

 $i = n1:n2 = +1 (1:1)$

S1

DIN 5482

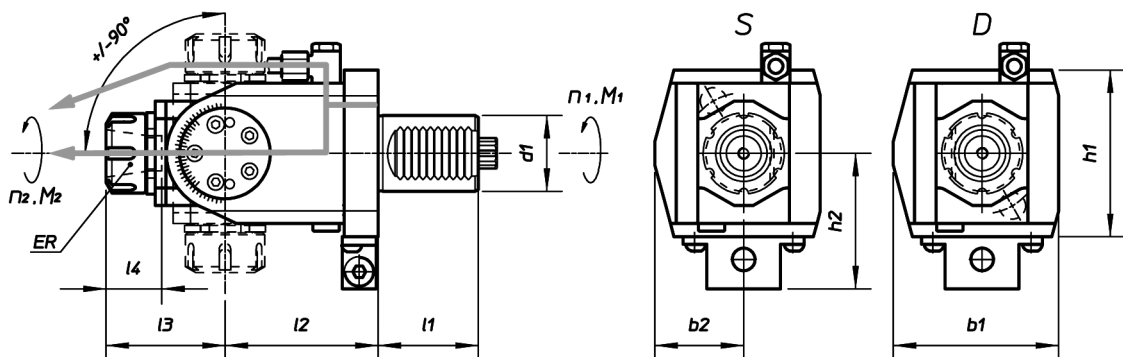


编号 code S	D	d1	ER	l1	l2	l3	l4	b1	b2	h1	h2	M ² Nm	n ₂ min-1	p kw
ROPPS 30 221SS1	ROPPS 30 221DS1	30	20	45	64	52	37	70	37	64	54	15	5000	3
ROPPS 30 321SS1	ROPPS 30 321DS1	30	20	45	97	52	37	70	37	64	54	15	5000	3
ROPPS 40 121SS1	ROPPS 40 121DS1	40	25	53	81	63	42	87	47	88	71	25	4000	4
ROPPS 50 121SS1	ROPPS 50 121DS1	50	40	78	123	101	47	134	54	108	82	50	4000	6
	ROPPS 60 121DS1	60	40	94	123	101	47	134	54	108	100	50	4000	8

16/S1

角度可调 Angle adjustable Orientabile winkeleinstellbar	筒夹型刀座 Collet chuck Portapinza Spannzangeaufnahme	内冷和外冷皆可 External and internal coolant supply Refrigerazione interna-esterna Kühlschmierstoffzuführung extern und intern
--	---	--

1 : 1 速比

 $i = n1:n2 = +1 (1:1)$


编号 code S	D	d1	ER	l1	l2	l3	b1	h1	h2	h3	h4	M ₂ Nm	n ₂ min-1	p kw
ROPPS 30 231SS1	ROPPS 30 231DS1	30	20	45	64	52	37	70	37	64	54	15	5000	3
ROPPS 30 331SS1	ROPPS 30 331DS1	30	20	45	97	52	37	70	37	64	54	15	5000	3
ROPPS 40 131SS1	ROPPS 40 131DS1	40	25	53	81	63	42	87	47	88	71	25	4000	4